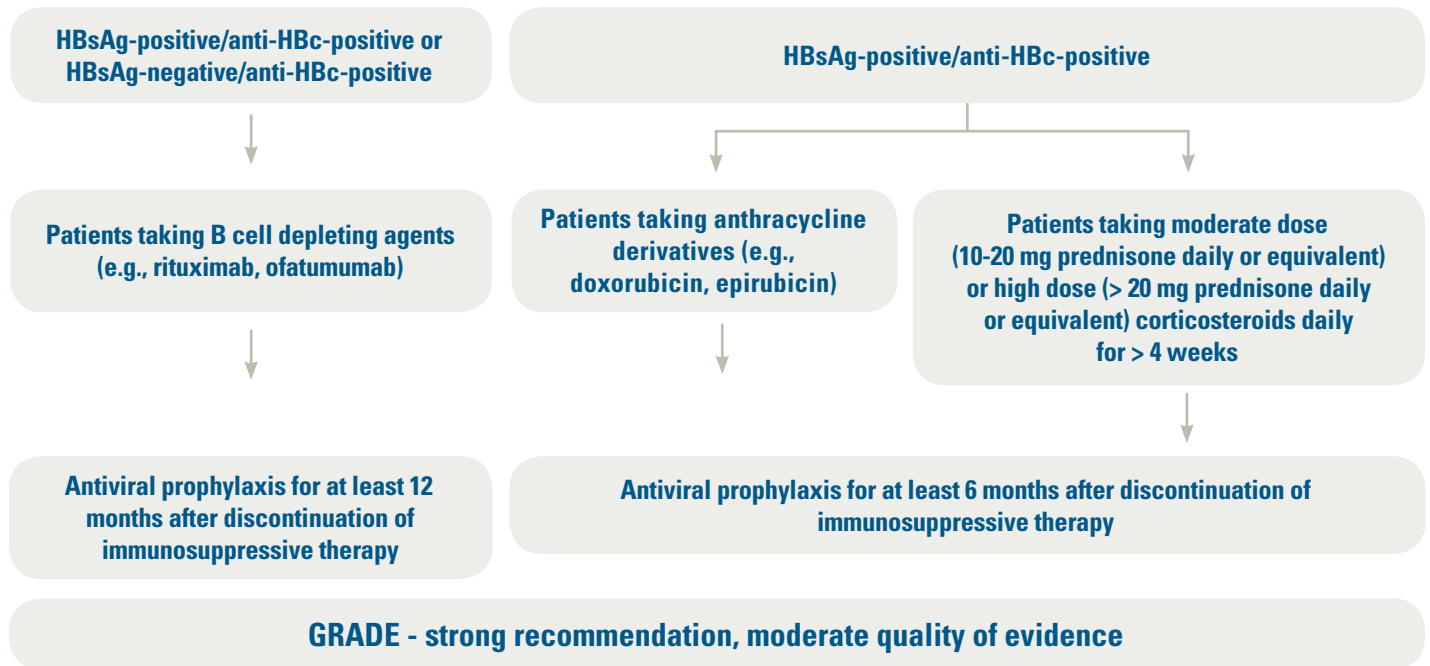


AGA INSTITUTE GUIDELINE ON Hepatitis B Reactivation (HBVr) CLINICAL DECISION SUPPORT TOOL

HIGH RISK (REACTIVATION RISK >10%)

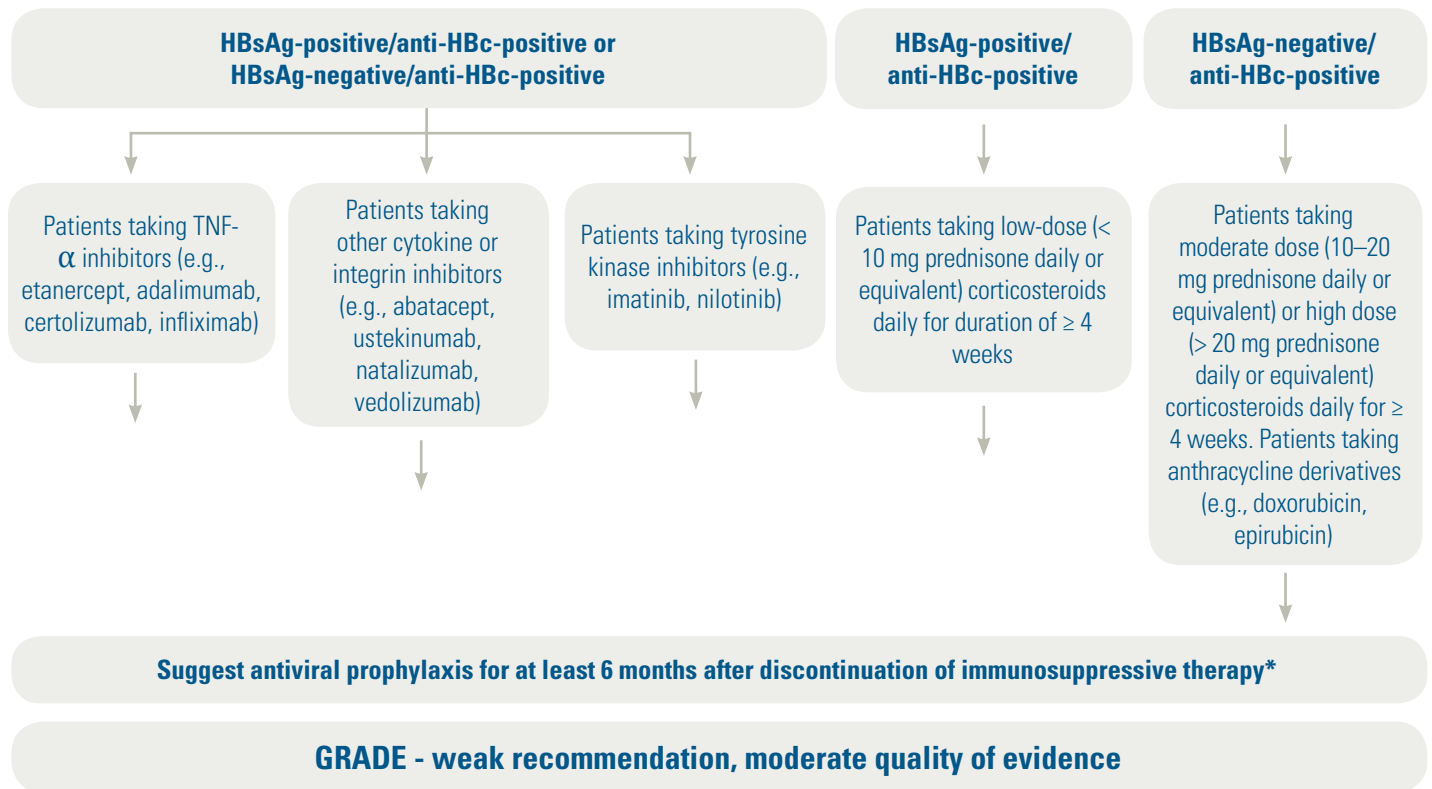


Review online at gastro.org/hbvrdecisiontool.



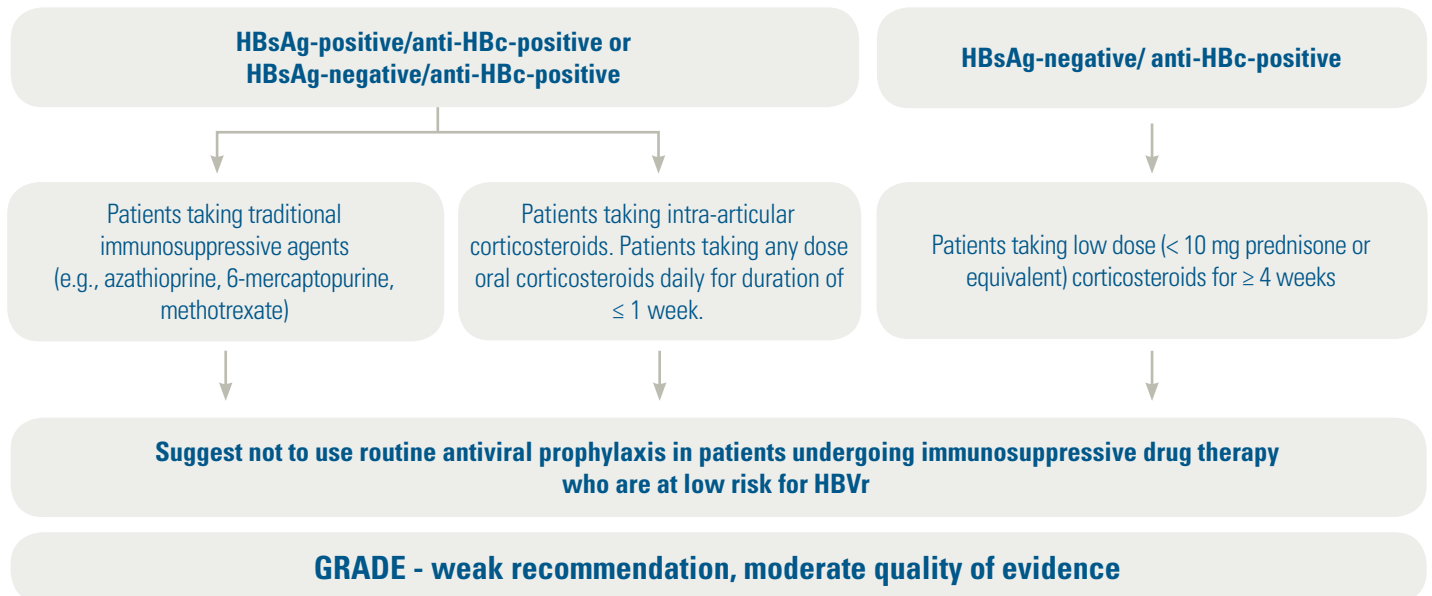
A PROGRAM OF THE AGA INSTITUTE

MODERATE RISK (REACTIVATION RISK 1–10%)



*Patients who place a higher value on avoiding the long-term use of antiviral therapy and cost associated with its use and a lower value on avoiding the small risk of reactivation (particularly in those who are HBsAg-negative), may reasonably select no prophylaxis over antiviral prophylaxis

LOW RISK (REACTIVATION RISK < 1%)



Review online at gastro.org/hbvrdecisiontool.



A PROGRAM OF THE AGA INSTITUTE